



2416 Bloomer Drive Alton, Illinois 62002 Bloomer Court

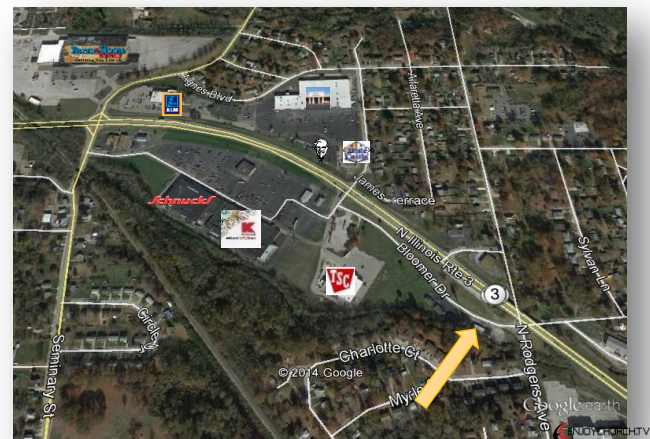


Square Footage: 1,750
Base Rent: \$1,458.33
Common Area: \$445.00
Total: \$1930.33/month

Description: This property is move-in ready with well-lit parking located adjacent to Homer M. Adams Pkwy (Hwy 3) at a signaled intersection

- Receptionist office
- Large conference room
- Kitchen
- Waiting room
- 3 private offices
- Full basement storage

**Call Scott Adams today for your appointment.
618-465-8900**



DISCLAIMER

The information contained herein has been given to us by the owner of the property or other sources we deem reliable. We have no reason to doubt its accuracy, but we do not guarantee it. All information should be verified prior to lease.