



# The Palisades Preserve

# The Palisades Preserve

The dramatic bluffs between Alton and Grafton, Illinois are renowned for their scenic beauty and views of downtown St. Louis. Now these bluffs and the ecologically significant lands on which they stand have been protected through the creation of The Palisades Preserve.

Described as one of the best remaining examples of undisturbed, biologically important lands in Illinois, the preserve's oak and hickory forests look much as they did 100 years ago. While more than half of the state's hill prairies have been lost over the last three decades, numerous remnant loess hill prairies are found at the preserve. The land supports many species of conservation concern and is located in the largest flyway in North America for migrating birds. The unfragmented forest provides essential breeding habitat for a suite of songbirds. The preserve also contains an undisturbed limestone cliff community and Native American burial grounds.



Great Rivers Land Trust initiated discussions with the Palisades owner, Adams Development Co., concerning permanent protection of the property through acquisition, a conservation easement and a land management plan. The Conservation Fund, the nation's foremost environmental non-profit dedicated to protecting land and water resources facilitated the acquisition in collaboration with Great Rivers Land Trust, Lewis and Clark Community College Foundation and National Great Rivers Research and Education Center to form the Palisades Preserve.

The Palisades Preserve now encompasses over 430 acres of bluff property located on the Meeting of the Great Rivers Scenic Byway. This land will be protected for environmental, scenic and educational purposes-forever.

For more information about The Palisades Preserve, please contact Great Rivers Land Trust at (618) 467-2265.

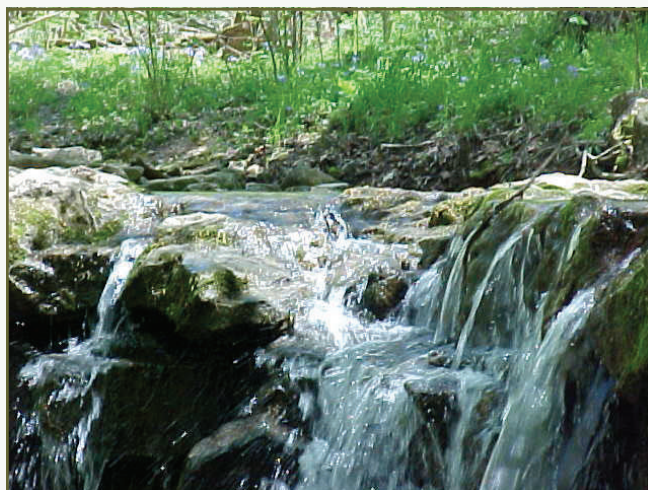
# Environmental Significance



The Palisades Property is the largest and most significant undeveloped property in the region. It is environmentally essential to the protection of 11 endangered or threatened species of plants and animals.

Forest fragmentation and conversion to other uses severely diminishes the quality of the forest for wildlife.

The preservation of the Palisades forest allows the great forest along the bluffs to remain connected and unfragmented to Pere Marquette State Park and beyond.

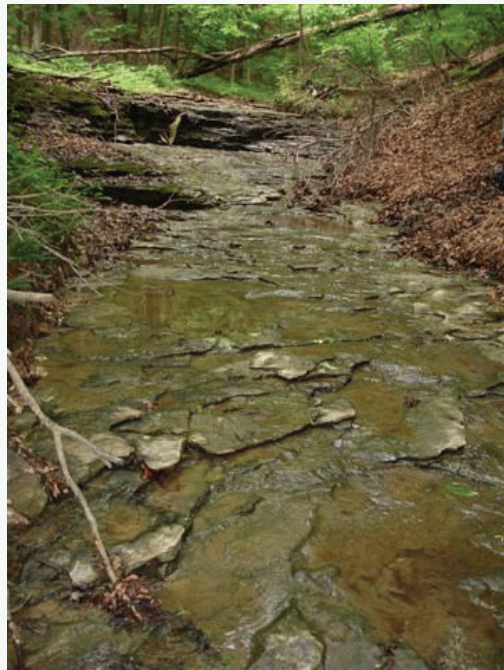


## Species of Conservation Concern

- ◆ TIMBER RATTLESNAKE
- ◆ GREAT PLAINS RATSNAKE
- ◆ WHIP-POOR-WILL
- ◆ RED-HEADED WOODPECKER
- ◆ YELLOW-BILLED CUCKOO
- ◆ NORTHERN FLICKER
- ◆ ACADIAN FLYCATCHER
- ◆ WORM-EATING WARBLER
- ◆ WOOD THRUSH
- ◆ KENTUCKY WARBLER
- ◆ OVENBIRD
- ◆ YELLOW-BREASTED CHAT
- ◆ INDIANA BAT
- ◆ BALD EAGLE
- ◆ EASTERN PRAIRIE FRINGED ORCHID
- ◆ PRAIRIE BUSH CLOVER
- ◆ DECURRENT FALSE ASTER

# Environmental Benefits

- Protection of native ecological forest communities, remnant forest types and late successional forests that provide habitat for aquatic and terrestrial plants and animals including many federal and state endangered species.
- Protection of watershed, local water supplies and reduction of erosion threat to the Mississippi Rivers.
- Promotion of continued and expanded forest stewardship.



- Protection and management of one of the largest contiguous forested areas in Illinois.
- Protection of both upland and bottom land areas.
- Protection and conservation of river corridor habitat essential to many rare animal and plant species.



# Public Benefits



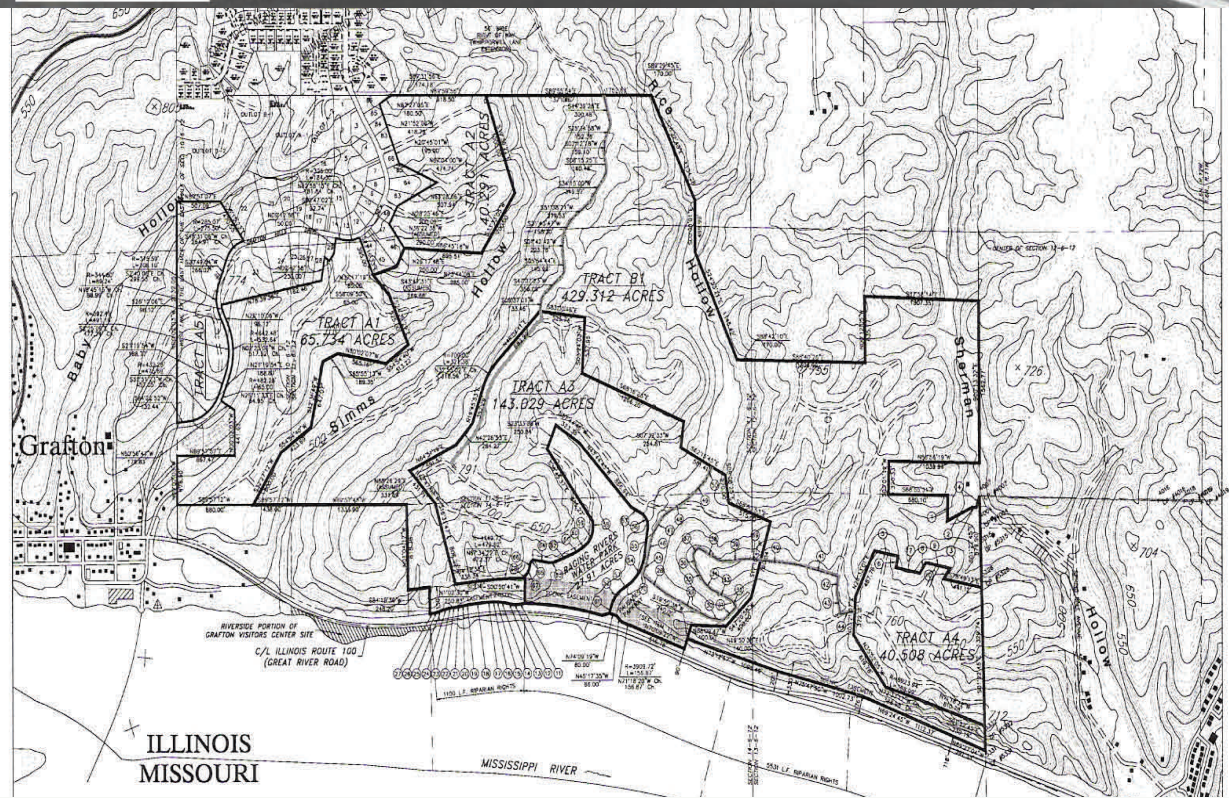
- Protection of the large, panoramic view and the surveyed view shed along the nationally designated scenic byway, the *Meeting of the Great Rivers Scenic Byway*.
- Continuation of environmental education and conservation awareness.

- Continuation and expansion of high quality riverine resources for recreational and tourism opportunities.
- Preservation of the natural beauty



- Protection of numerous cultural resources, and historic landscapes at the great rivers confluence of the Illinois, Mississippi and Missouri Rivers.

# The Palisades Plat



# Adams Development, Co.

Adams Development Co. was founded by Homer and Juanita Adams in 1961. Homer Adams' development career began in the 1950's with the purchase of property from the Missionary Oblates in Godfrey, Illinois. An avid horticulturist, he and his wife managed 10 greenhouses, a 60-acre orchard, and 100 acres of nursery stock on the property. As the needs of the community changed, he developed the residential subdivision and professional business park on the property now known as D'Adrian Gardens. His development career broadened to include over 200 building projects such as Alton Square Shopping Center and Northport Industrial Park. Following his death in 1983, *The Beltline* - the roadway that serves as Alton's primary business artery was renamed - *Homer M. Adams Parkway*.

Today, the primary focus of the company is residential and commercial real estate development and commercial property management in the Southwestern Illinois region. Adams Development Co.'s land holdings range from wooded residential home sites, prime commercial building sites and retail shopping centers, to 1,000 acre planned unit developments.

Scott Adams serves as President, CEO and Board member of Adams Development Company. Scott, son of the company's founder, is involved in many leadership, development and brokerage capacities to provide diverse client services. In addition to Adams Development Company, his professional services are extended through S. Adams Agency, Inc., Palisades Development and Management Corp., and Raging Rivers WaterPark, Inc. His business affiliations include Greater Gateway Association of Realtors, Illinois and National Association of Realtors, Home Builders Association of Greater Southwest Illinois, Illinois and National Association of Home Builders, Grafton Chamber of Commerce, River Bend Growth Association, and Southwestern Illinois Leadership Council. He is a director and member of New Testament Fellowship Church.



# The Conservation Fund

The Conservation Fund is dedicated to balancing economic and environmental objectives to preserve America's land legacy - its natural, cultural and historic heritage - for current and future generations. Through its partnership-driven approach, the Fund works with corporations, governments and communities to develop innovative solutions for complex conservation challenges. Since its inception in 1985, the Fund has helped to protect more than 5 million acres across the country - from wildlife habitat to working with landscapes to community open space. Unsurpassed in its effectiveness and efficiency, The Conservation Fund has been recognized for the past four years as the nation's top-rated environmental nonprofit by the American Institute of Philanthropy and named one of the best charitable investments by Forbes, Money, and Worth magazines.

Central to its mission, the Fund assists government agencies and nonprofit organizations to acquire and conserve land across the country - permanently protecting wildlife habitat, recreation areas and open space. Working with private and public sectors, the Fund demonstrates market-based solutions for challenging environmental issues. Through its courses, workshops and seminars, the Fund serves as a national resource for land conservation professionals across the country.

The Fund delivers real estate expertise to public agencies, corporations and nonprofit organizations, from site identification and acquisition to deal structure and finance. The Fund offers corporations and individuals a unique strategy for the disposition of surplus real estate resulting in tax benefits. The Fund helps companies mitigate greenhouse-gas emissions related to climate change through the acquisition and restoration of forestland. The Fund also assists foundations, corporations developers and private landowners with projects that blend conservation and economic development.

**THE CONSERVATION FUND**

*America's Partner in Conservation*



# Great Rivers Land Trust

America's great rivers, the Mississippi, the Illinois and the Missouri, meet in a broad floodplain bounded by majestic bluffs north of St. Louis, Missouri. Great Rivers Land Trust was founded in 1992 in Alton, Illinois by citizens committed to protecting the lands along this beautiful stretch of the Mississippi.

Great Rivers Land Trust is a non-profit organization dedicated to preserving open spaces, scenic beauty, critical wildlife habitat, and the unique river landscape that is our special heritage. The land trust achieves this through a variety of conservation techniques including donations of scenic and conservation easements, acceptance of land donations, and acquisitions of key parcels of land.

Great Rivers has acquired and developed open spaces for public use such as Clifton Terrace Park, Stirtz Landing and LaVista Park. The organization also protects 2,500 acres of natural land in the Mississippi River corridor in collaboration with The Nature Institute, Department of Natural Resources and numerous private land owners. Some of the properties protected include the Oblate Forest, the Hutchinson Bird Sanctuary, Olin Nature Preserve and now, the Palisades Preserve.

Great Rivers Land Trust manages a number of projects related to the protection of natural resources. The Piasa Creek Watershed Project is managed by the land trust in cooperation with the Illinois American Water Company. This project reduces the amount of sediment discharged into the Mississippi River. Under this project, the land trust restored the 40-acre Boy Scout Lake at Camp Warren Levis. The lake filled with silt and had become useless. Half of the lake was restored for recreational purposes and half was restored as an enhanced wetland. The 253-acre camp is protected by a conservation easement.

Great Rivers Land Trust is also involved in other community projects including wetland enhancement, planting tree buffers, park design and development, and historical site protection.



## Lewis & Clark Community College Foundation

The Lewis and Clark Community College Foundation complements and supports Lewis and Clark Community College by providing scholarships, awards, and other assistance that is funded through endowments, individual and corporate gifts, partnerships and fund-raising activities.

The Foundation serves as the development office, holds, invests and manages the College endowment, and serves as the office for two alumni constituencies: Lewis and Clark Community College and Monticello College.

Prior to the acquisition of the Palisades Preserve, the Foundation boasted more than \$8.6 million in assets, placing it among the top community college foundations in the United States.

Financial support of the Foundation is received through endowments, individual and corporate gifts, partnerships and fundraising activities.

The Foundation's two major fundraisers each year include COLLAGE, a dinner and auction event, and the Annual Golf Classic. Money raised from COLLAGE is used to fund scholarships for any student in the Lewis and Clark Community College District who graduates in the top 10 percent of their class and chooses to pursue their post-secondary education at Lewis and Clark. The Golf Classic raises money for athletic scholarships and student athletics at Lewis and Clark.



## National Great Rivers Research and Education Center

The National Great Rivers Research and Education Center (NGRREC) is the result of a unique partnership between Lewis and Clark Community College, the University of Illinois, the Illinois Natural History Survey and other organizations.

The Center is located near the confluence of three great rivers - the Mississippi, the Missouri and the Illinois. It was developed to explore important questions about the rivers, the environment and the impact on communities as well as to provide education. The mission of the Center is to study the ecology of the big rivers, the workings of the watersheds that feed them, and the relationship of the rivers to the communities that use them. NGRREC aspires to be a leader in scholarly research, education and outreach related to large rivers, their floodplains and watersheds, and their associated communities.

Since its inception in 2002, the center has funded more than \$285,571 in research and, in addition, has provided expert staff to lead research funded by other sponsors. NGRREC's research program is linked closely to the Illinois Natural History Survey (INHS) Great Rivers Field Station. For more than 100 years, INHS has been conducting research on the Illinois and Mississippi rivers. Now, with NGRREC, both groups have partnered to conduct very sophisticated ecological research, while also providing great training and educational programs for faculty, students and the public.

Current educational programs include summer internships, an Annual Water Festival for 5<sup>th</sup> graders, public symposia, the Annual Wings of Spring Confluence Birding Festival and an environmental conflict resolution program for high school students funded by a U.S. EPA Region 5 environmental education grant. NGRREC has provided 69 students, from 13 institutions of higher learning, with internship opportunities.

In the spring of 2006, NGRREC also became the official administrator of the Illinois RiverWatch Program, a stream monitoring program funded through a grant from Illinois Lieutenant Governor Pat Quinn.

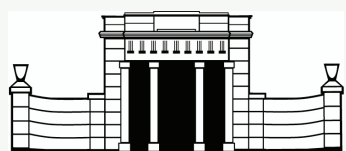


**The National Great Rivers  
Research & Education Center**



## THE CONSERVATION FUND

*America's Partner in Conservation*



**LEWIS & CLARK**  
COMMUNITY COLLEGE  
FOUNDATION



**The National Great Rivers**  
**Research & Education Center**